

Pioneering Diabetes Care

Roche in Diabetes

Around 1.4 million people in the UK live with diabetes and almost as many are thought to have the condition without knowing. The number of people with diabetes is snowballing - here and worldwide.

With no cure yet in sight, better management of diabetes is the best way for patients to improve and maintain their quality of life and to prevent or delay the onset of health complications that are distressing and costly to treat.

One of the most important elements of managing diabetes, along with diet and exercise, is to monitor blood glucose levels. Roche Diagnostics is the pioneer and the leader in the development of blood glucose monitoring systems. We drive and provide advancements in technology, products and services, the success of which has made us number one in the diabetes care market.

Our over-riding goal is to make living with diabetes easier. Our diabetes technologies enable people with the disease and the healthcare professionals who care for them to make real-life decisions about treatment based on precise, accurate and actionable information.

The Accu-Chek brand includes a wide range of blood glucose meters to suit the needs of different people with diabetes, whether they are a 10-year-old with type 1 diabetes or a 70-year-old who has lived with the disease for years. These include integrated systems that combine and house all the necessary components including meter, test strips and lancets.

We also provide computer software that helps analyse trends and patterns in blood glucose levels. Other internet tools enable people with diabetes to actively participate in, better understand and better manage their disease. Roche also has tests that indicate how well a patient has managed their blood glucose levels during the previous few months.

Our 2003 acquisition of Disetronic – a world leader in the research and development of insulin pumps and injection systems for the treatment of diabetes – also makes Roche Diagnostics a leader in integrated diabetes management. Our sophisticated programmable insulin pumps allow patients to continuously administer insulin doses according to their individual needs.

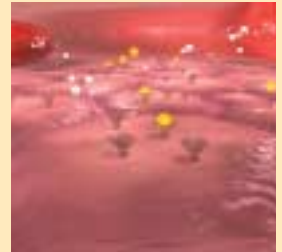
Diabetes is the commonest cause of kidney failure and 40 per cent of dialysis patients have diabetes.

One of the complications of kidney failure is anaemia, which poses an additional burden on patients. Fatigue, lethargy, palpitations, headache and breathlessness are just some of the symptoms caused by a reduction in the amount of oxygen-carrying pigment in the blood. One of Roche's key therapies is a genetically engineered version of a naturally occurring substance that tackles this anaemia by stimulating the production of red blood cells.

At Roche, we also take an active approach to tackling obesity and overweight – one of the main causes of diabetes – with an innovative pharmaceutical treatment. Nine out of ten people with type 2 diabetes are overweight or obese and weight management is the first line of treatment for type 2 diabetes. Even a modest reduction of body weight improves blood glucose control in patients with type 2 diabetes and leads to improvements in associated cardiovascular risk factors such as high blood pressure and high cholesterol levels.

Looking to the future, Roche actively invests in research and development to create and bring to market more innovative products in diabetes care. We are developing cutting edge technologies that could help identify some of the people who are unaware that they have diabetes, ensuring they have the opportunity to manage their diabetes before it is too late and complications have set in. We are also conducting research to develop a viable automated pancreas that will provide ongoing blood glucose readings and automatic insulin dosing. As well as our own research and development teams, Roche taps into the innovation of a network of partnerships and alliances with other companies.

We hope that some day there will be a cure for diabetes. In the meantime, Roche will continue to try to prevent the onset of diabetes and to provide innovative products that make living with diabetes easier.



www.rocheuk.com

Produced August 2003 by Corporate Affairs for Roche in the UK. welwyn.corporate_affairs@roche.com

Roche Products Ltd., 40 Broadwater Road, Welwyn Garden City, Herts AL7 3AY

Roche Diagnostics Ltd., Bell Lane, Lewes, East Sussex BN7 1LG

Includes images from the Roche Health Kiosk