

Targeting Care

Roche in Oncology

Cancer remains one of the most feared diagnoses for patients and one of the key medical challenges for those who care for them.

Great advances have been made thanks to screening programmes and new treatments, but one in three people will be diagnosed with cancer during their lifetime. Tragically, most of us will know someone whose life is affected by cancer.

Roche is committed to making a difference by researching, developing and providing innovative treatments and tests to support patients and the oncologists, specialist nurses and pharmacists who care for them. We have a long term commitment to fighting cancer, with a rich history of medical innovation and a promising pipeline for the future.

Our approach is to target cancer with care. We strive to support the early diagnosis and better targeted treatment of cancer. As well as tests and therapies, our products tackle the associated health issues that can so seriously undermine patients' quality of life.

The earlier a cancer can be diagnosed, the better. Bowel cancer, for example, is treatable if detected early, but around 20 per cent of newly diagnosed patients have cancer that has already spread beyond the bowel (metastatic disease).

As the UK's leading diagnostic company, Roche offers a broad portfolio of tests that indicate the presence of tumours in the prostate, bowel, liver, ovaries, breast, stomach, pancreas and lungs. We also provide a range of molecular oncology tests for use in our LightCycler system for laboratories.

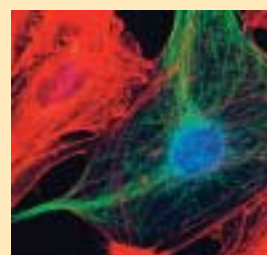
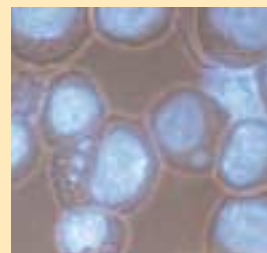
Our therapies focus on breast, bowel cancer and Non-Hodgkin Lymphoma, a type of cancer of the blood. Roche pioneered monoclonal antibodies which target tumours directly, sparing healthy cells and thereby reducing side-effects like nausea and hair loss. We developed the first monoclonal antibody ever to make it into clinical practice and cancer treatment and the first for use in breast cancer.

Cancer patients can also suffer from anaemia, as a result of their tumours or as a side-effect of chemotherapy. This can cause chronic fatigue, adding to the mental and physical burden of the illness for patients and their families. We provide a therapy that helps stimulate red blood cell production and combat anaemia. Other Roche products treat the nausea and bone weakening that patients can face after having chemotherapy.

Our global diagnostic and pharmaceutical teams work together to research and develop the tests and therapies that will have a significant impact on the management of cancer in the future. Advances in genetics and genomics offer exciting opportunities for more individualised approaches in diagnostics and pharmaceuticals.

Our development teams in the UK organise international and local clinical trials of a rich pipeline of potential new products to treat lung, breast, ovarian and bowel tumours and metastatic bone disease. Roche also has access to a global network of innovation through alliances and partnerships with companies including the UK's Antisoma.

We see a future where Roche will make an even greater difference to the health and quality of life of cancer patients and their families in the UK.



www.rocheuk.com

Produced August 2003 by Corporate Affairs for Roche in the UK. welwyn.corporate_affairs@roche.com
 Roche Products Ltd., 40 Broadwater Road, Welwyn Garden City, Herts AL7 3AY
 Roche Diagnostics Ltd., Bell Lane, Lewes, East Sussex BN7 1LG